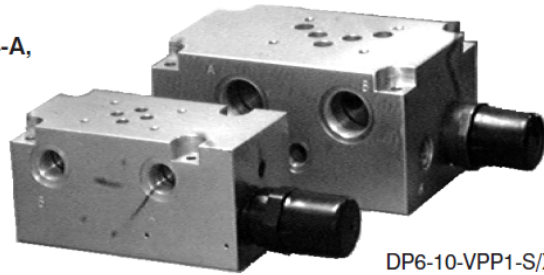
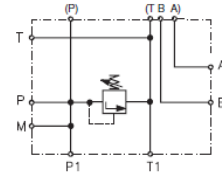


**PŁYTA ZAWOROWA DP6 ...**

- Basic manifold for hydraulic systems
- 6 pressure ranges
- Installation dimensions to ISO 4401-AB-03-4-A, ISO 4401-AC-05-4-A, DIN 24 340-A6 and DIN 24 340-A10



DP6-06-VPP1-S/XX

DP6-10-VPP1-S/XX

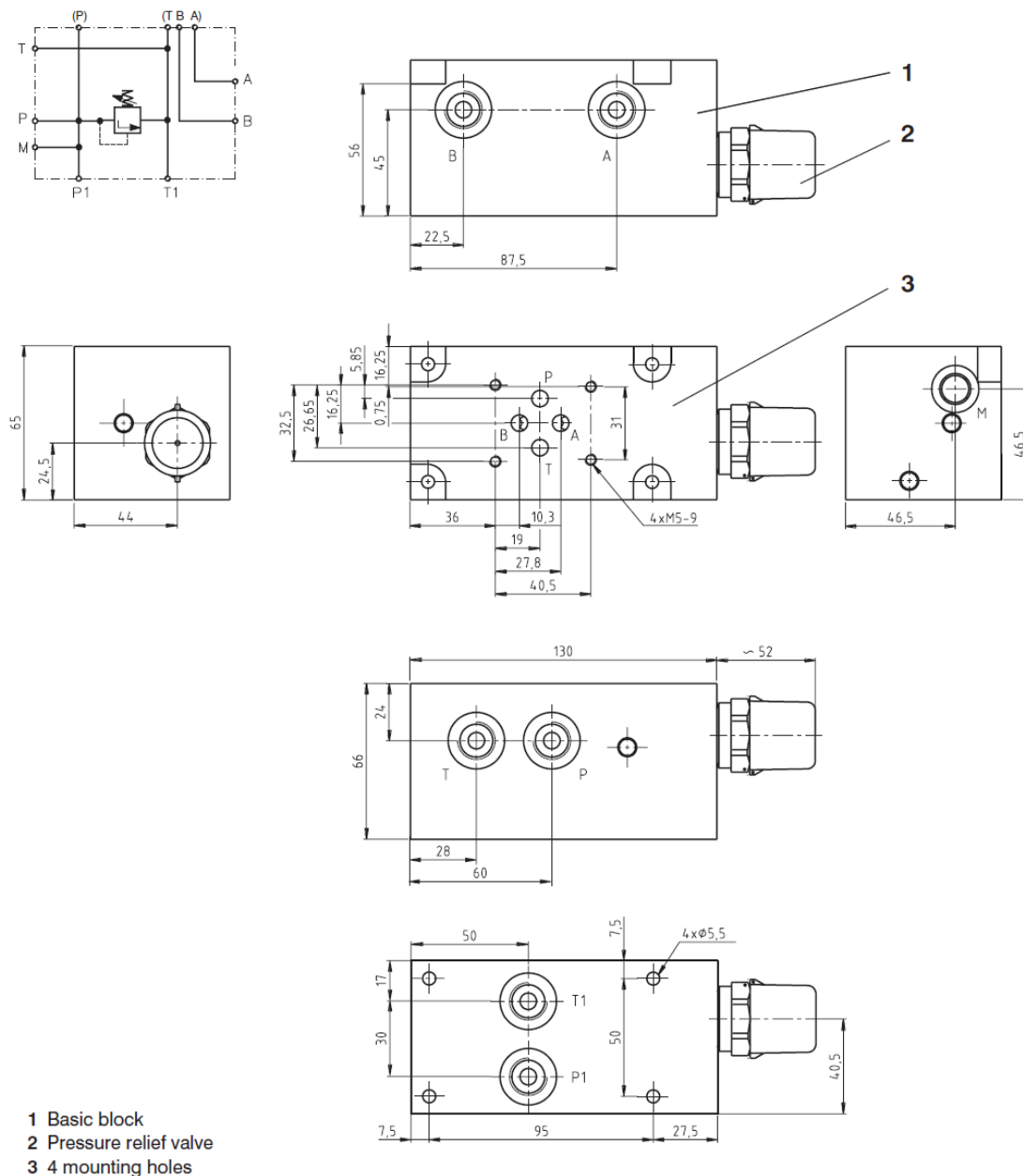
**Functional Description**

Basic manifolds DP6 are used for hydraulic systems which require only one directional valve assembly. With regard to its versatile connection possibilities, it is suitable either for horizontal mounting of the pump drive unit on the tank cover, or for vertical arrangement with the pump situated in the tank under the oil level.

The steel manifold can be supplied in two sizes. A direct operated pressure relief valve is available in six pressure ranges. The basic surface treatment of the block is zinc coating.

**Ordering Code**

DP6 - [ ] - [ ] - [ ] / [ ]			
Basic block			
Nominal size			
06 mm	<b>06</b>	<b>2.5</b>	<b>Druckstufe</b> up to 25 bar
10 mm	<b>10</b>	<b>6.3</b>	up to 63 bar
		<b>10</b>	up to 100 bar
		<b>16</b>	up to 160 bar
		<b>25</b>	up to 250 bar
		<b>32</b>	up to 320 bar
Pressure relief valve			
VPP1 - 06, 10	<b>VPP1</b>	<b>S</b>	<b>Adjustment element</b>
VPP2 - 06	<b>VPP2</b>	<b>R</b>	Screw with inside HEX 5
			Hand knob

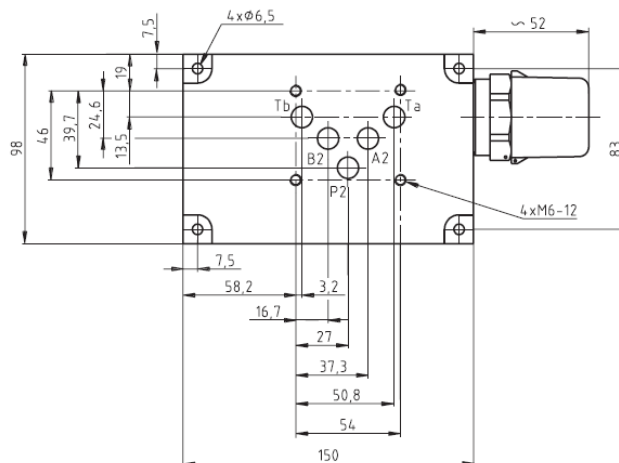
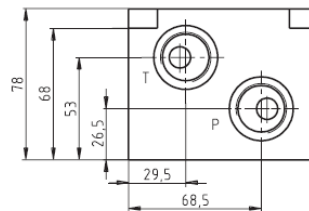
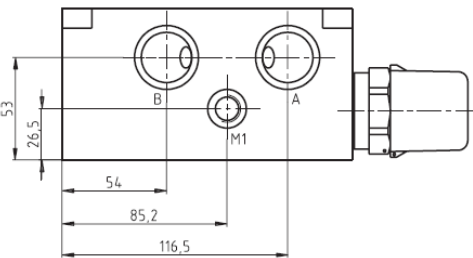
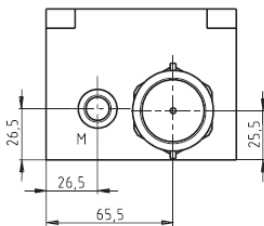
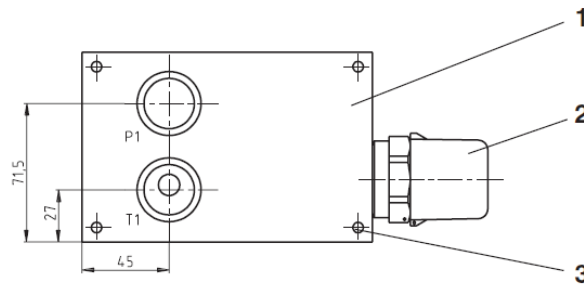
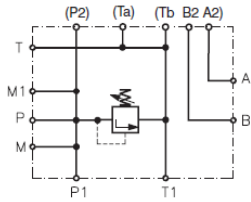
**PŁYTA ZAWOROWA DP6 ...**
**DP6-06-VPP1-S/XX**


Port	A	B	P	T	P1	T1	M
Thread	G3/8	G3/8	G3/8	G3/8	G3/8	G3/8	G1/4
Counterbore	Ø24	Ø24)	Ø24	Ø24	Ø28	Ø28	Ø20
Depth of counterbore	1	1	1	1	5.5	5.5	1

**FLUID AND MOTION CONTROL \* SENSORS & MEASUREMENT \* FILTRATION & FLUID MANAGEMENT**
**BTH HYDROTECHNIK 25-040 KIELCE UL. PAKOSZ 8 B**

 Tel./Fax.: +48 041 361 02 87 \* +48 519 100 688 \* [biuro@hydrotechnik.pl](mailto:biuro@hydrotechnik.pl) \*

[www.hydrotechnik.pl](http://www.hydrotechnik.pl)

**PŁYTA ZAWOROWA DP6 ...**
**DP6-10-VPP1-S/XX**


- 1 Basic block
- 2 Pressure relief valve
- 3 4 mounting holes

Port	A	B	P	T	P1	T1	M	M1
Thread	G3/4	G3/4	G3/4	G3/4	G3/4	G3/4	G1/4	G1/4
Counterbore	Ø33	Ø33	Ø33	Ø33	Ø38	Ø38	Ø38	Ø20
Depth of counterbore	1	1	1	1	5.5	5.5	1	1

**FLUID AND MOTION CONTROL \* SENSORS & MEASUREMENT \* FILTRATION & FLUID MANAGEMENT**
**BTH HYDROTECHNIK 25-040 KIELCE UL. PAKOSZ 8 B**

 Tel./Fax.: +48 041 361 02 87 \* +48 519 100 688 \* [biuro@hydrotechnik.pl](mailto:biuro@hydrotechnik.pl) \*

[www.hydrotechnik.pl](http://www.hydrotechnik.pl)